



**B&W Trailer Hitches**  
 1216 HWY 224 / PO Box 186  
 Humboldt, KS 66748  
 P:620.473.3664  
 F:620.473.3766

Call or Email us for  
 Installation Support  
 hitches@turnoverball.com  
 www.turnoverball.com

**NOTE:** *we recommend reading instructions before beginning the installation.*

## Installation Instructions

# Model RVXA3110

### 5th WHEEL HEAD LEVELING KIT

This kit is designed to rotate the coupler head towards the rear of the truck.

#### INSTALLATION INSTRUCTIONS:

##### First Step: *Clip assembly*

Assemble the 1/4" cap screw, mounting clip, spring and 1/4" lock nut as shown in figure 1.1 and 1.2. Tighten the lock nut just enough that the spring will stay in place but can also be adjusted if needed.

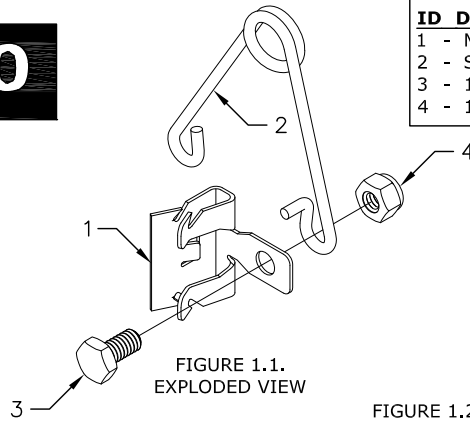


FIGURE 1.1.  
EXPLODED VIEW

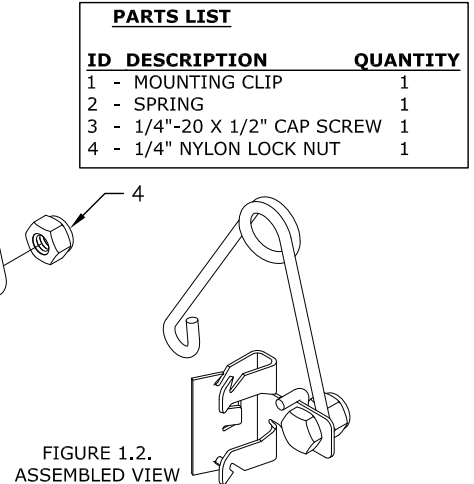


FIGURE 1.2.  
ASSEMBLED VIEW

PARTS LIST		
ID	DESCRIPTION	QUANTITY
1	MOUNTING CLIP	1
2	SPRING	1
3	1/4"-20 X 1/2" CAP SCREW	1
4	1/4" NYLON LOCK NUT	1

##### Second Step: *Install the clip assembly.*

Remove the 5th Wheel head and saddle from the base. Next, locate the driver side Arm and the flange closest to the truck cab, see diagram 2.1. The clip should be placed so when the spring's coil is centered in line with the edge of the arm there is 1/4" of clearance between the bottom of the rubber bumper and the top of the spring, see figure 2.2. Drive the clip securely onto the flange with a hammer. Replace the head and Saddle.

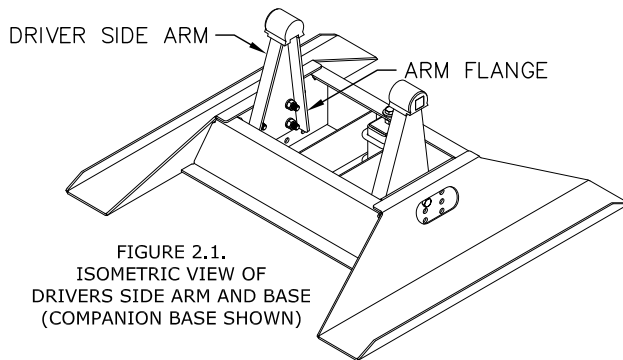


FIGURE 2.1.  
ISOMETRIC VIEW OF  
DRIVERS SIDE ARM AND BASE  
(COMPANION BASE SHOWN)

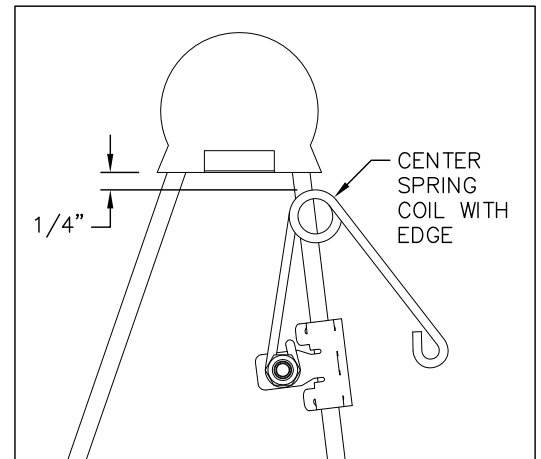


FIGURE 2.1.  
ISOMETRIC VIEW OF  
DRIVERS SIDE ARM AND BASE

##### Third Step: *Adjust and tighten the spring.*

By rotating the spring on the clip, the orientation of the top surface of the coupler can be set. (To increase the rotational force on the head, rotate the coil of the spring toward the cab of the truck.) Rotate the spring to the desired angle and fully tighten the 1/4" hardware. Make sure the orientation of the spring does not interfere with the saddle latch, see figure 3.1.

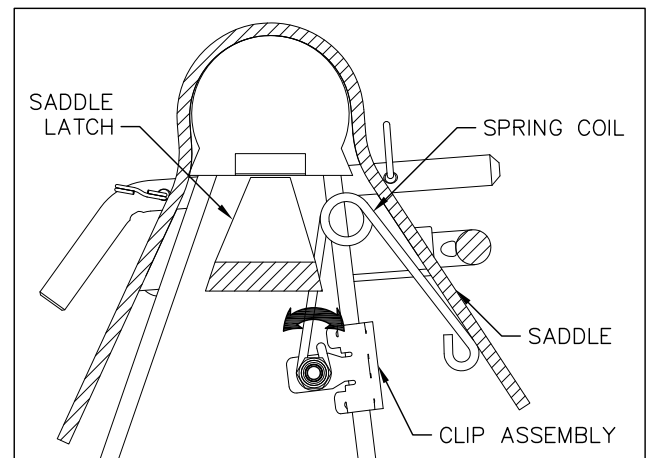


FIGURE 3.1.  
CUTAWAY VIEW OF DRIVER SIDE ARM AND SADDLE